

# The WOODCHESTER Word

Issue 54-Spring 2016

## Burrell traction engine 4010

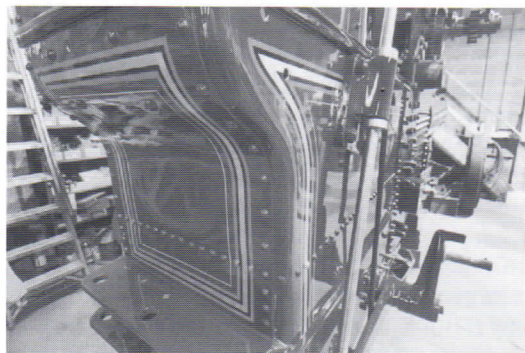
No. 4010, a 5hp 3 speed double crank road locomotive was new to Henry Workman sawmill of Woodchester in April 1925. The Burrell was used by the mill for timber extraction and haulage and was driven by a local resident Ralph Vincent Price of Church Cottage, Woodchester.

The sawmill was started by George Workman in 1795 in North Woodchester, but would later move when a second mill built at South Woodchester (just over the A46 from our yard) in about 1870 and the business was further developed by his sons Henry and Francis Workman. The sawmill was driven by a large stationary steam engine, this drove line shafts to various saws in the main building.



The mill also had railway sidings running from the Nailsworth branch line. On these sidings were two mobile steam cranes to move the timber. These could cross the A46 into the storage yard where our business is situated, (the traffic being stopped by a man with a red flag,) collect the logs and carry them back across to the mill for sawing. Much of the timber for the mill was felled on the Ebworth estate near Sheepscombe, as well as the Horsley and Kingscote Woods. It's in these woodlands that Burrell 4010 would have worked during the 1920s and into the late 1930s, extracting round timber with its winch and hauling it back to Woodchester for sawing. In addition to the engine, the mill also relied on teams of horses for the haulage of timber, they were more suited to the difficult terrain where the engine would have bogged down.

By the late 1930s much of the timber haulage work at the sawmill was being carried out by Denis Brown (my Grandfather) who had become main haulier for Henry Workman and by January 1941 the engine was sold to Jesse Vines, the well known engine dealer from Gloucester.



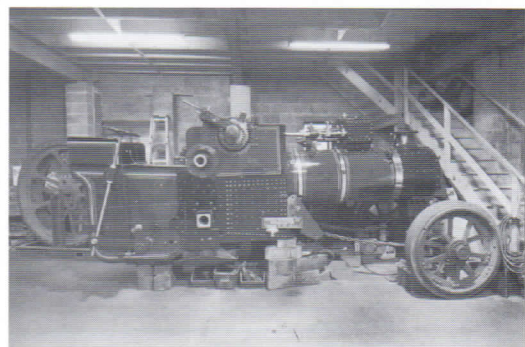
Jesse Vines had the engine for only a short time and in August 1941 the engine was sold on to agricultural contractor and dealer Murch Bros of Umberleigh, Devon. The engine was used by Murch for sawing and threshing. After a short time engine was sold on again to Chapman Bros, a agricultural contractor of St. Wenn, near Bodmin, Cornwall. They used it for threshing through the war years and into the late 40s.



Chapman Bros would be the engine's last commercial operator and it was sold into preservation around the early the 1950s to Reg Tonkin of St Eval, Cornwall. Whilst in his ownership he took it to the early West of England steam rallies from 1956 and into the 1960s, but Reg was unable to keep up with maintenance of the old engine and 4010 would spend a number of years laid up in Cornwall until 1977, when it was sold to Martin Burr from Sheffield. The engine by this time had suffered greatly, not only from the heavy work it had carried out commercially but also from the salty Cornish sea air. Martin soon began restoration work, fitting a new fire box and other worn parts, but he decided to sell the engine before it could be completed.

On August 21st 2014 after much negotiation we purchased the engine, and it returned to Woodchester after being away since the early 1940s. We are continuing the restoration work and hope to have the engine ready for latter 2016. If anyone has further information they can pass on regarding the history of Henry Workman's sawmill or even the engine, it would be gratefully received.

by Ed Brown of Denis Brown and Sons, South Woodchester





# EASTER TRADITIONS

## Easter Traditions

A long time before chocolate Easter Eggs were thought of – the first ones only date from the beginning of the 18<sup>th</sup> century – the egg has had an important symbolic importance at this time of the year. As a part of Easter (as well as the previous springtime celebrations that Easter supplanted) the egg is linked to rebirth, new life and new beginnings, not just in the Christian belief of salvation, resurrection and renewal but also to the ancient gods that personified the countryside and how the seasons effected it in the eyes of the early inhabitants in the Woodchester countryside several thousand years ago. Other than our valued church services, there are no village celebrations in Woodchester over Easter. Why can we not plan events such as an egg rolling competition or barrel race from the Ram to the Royal Oak where teams race against each other carrying an empty beer barrel between them as a relay team?



## May Day



May Day – a very old spring festival, an international workers holiday and a distress call (invented by an official at Croydon Airport in 1923 for its resemblance to the French *m'aider* or help me.) But it's the first definition that brings pictures to our mind of maypole dancing, May Queens and Morris Dancers. These are probably elements of its deep pagan roots as a festival of fertility. Has anyone thought of having May Day celebrations in Woodchester? We have the village green, we have Morris Dancers, we have access to a may pole and we almost certainly will have many May Queens in our two primary schools!!

## COMPLETE TIMBER SPECIALISTS

Denis Brown & Son Ltd

Broadmead Timber Yard, Woodchester, Stroud, Glos GL5 5EG



Tel: 01453 873516 Fax: 01453 873333

www.timber-yard.co.uk • email: enquiries@timber-yard.co.uk

## News from the Priory

We have a concert coming up on April 22nd when the ever popular Stuart Singers are returning to our church at 7.30pm tickets £8 In January we hosted the Nailsworth Churches Together service which featured Latvian foods, bread with a salt-filled cavity, and ginger biscuits topped with iced crosses. Every year the theme comes from a different country. We practised hard to learn all the chants for our Lenten Taize service which is both contemplative and candle-lit. Some of the children from St. Dominic's school are helping to build our Easter Garden this year, outside the north porch, which shows the Easter story in a meaningful way. We are also celebrating Swienschonka again, the beautiful Polish custom of filling decorated baskets with symbolic foods and bringing them to be blessed on Holy Saturday. Paschal lambs made of butter can be bought in Polish supermarkets. I kept mine in the freezer in case they were not available this year, but they are.

Jennifer Bailey



# All around us - our Woodchester Wildlife

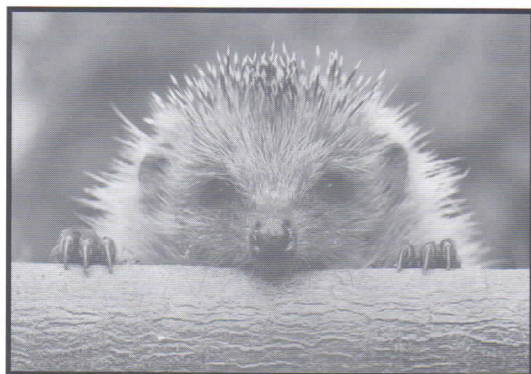
## Jack fights Jill or Mad March Hares?

Do hares really have boxing matches in March? The answer is no, although country law and rural thinking did suggest when two hares were on their hind legs in a boxing pose they were having a boxing match. In reality, it is almost certainly a jill, (the female hare) fending off the jack (the male) with her forepaws. Jacks compete with each other for the attentions of the jill in high speed chases, leaps and mini punch-ups. Some naturalists think this is the way the jill tests her potential mates. The strongest and most persistent jacks will make the best father for her young. Hares box and mate throughout the spring months so the association with March is strange. It may have come about because in an early spring, the grass is shorter and so the hares are more visible to our eyes.

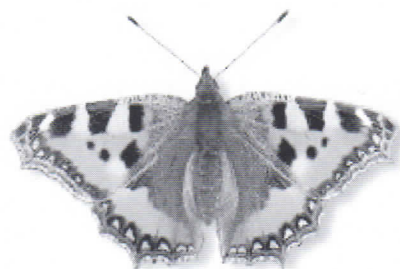


## Our missing hedgehogs

Hibernation is an exceptionally risky strategy and, of course, only practised by hedgehogs, bats and dormice in Gloucestershire. For hedgehogs, it's the only way they can survive the winter. As autumn progresses, there comes a time when there isn't enough food to be found so he/she will search out a nice safe spot to curl up in and to spend the winter. Our hedgehog then enters a state where its metabolism virtually stops. It breathes only once every few minutes, its heart rate reduces from 180 beats a minute to just 20, and its outer body temperature may drop 25 degrees to -10 degrees centigrade, with only the core round its heart maintained at the normal level. In this state it slowly burns up its reserves. Eventually, a steady period of spring weather triggers off its waking process. It burns off fat to raise its body temperature then goes off in search of food and drink as quickly as possible. Sadly, the severe fall in hedgehog numbers across the country during the last 25 years means that many of our children are growing up in a Woodchester where they have never seen a hedgehog. Older readers will certainly remember the hedgehogs in our gardens and the annual sad hedgehog carnage on the roads.



## A tortoiseshell romance – what can we learn from them?



You might not have seen small tortoiseshell butterflies yet this spring but soon they will be out and about in our gardens. When the weather warms up, their life starts to sizzle and romance moves into full swing! They haven't got a lot of time so things move quickly. Male tortoiseshells have a strict daily routine. In the morning they bask in the sun, feed on nectar and look for new food sources. In the afternoon, however, they turn to romance and courtship. First a male sets up his territory over some nettles and keeps other males off his patch, then waits for a female to appear. When she does, he intercepts her and persuades her to land. Then he cosies up to her and beats his antennae against her forewings, a sound that even humans can hear. This carries on for some hours then they both creep into the low vegetation and mate. Now come on men, can you beat that?!

## The Garden Robin

Every winter for the last many years, the editor has had company when digging or working in his garden. It would be good to think that it was the same robin who followed him round the garden looking for the worms dug up by the gardener's activity but no, it's unlikely to be the same one year after year. On average, only one in four robins reach their first birthday. The oldest recorded robin was 12 years old but this is exceptional. Starlings and blackbirds do better, surviving on average 2.5 years and may live for 20 years if lucky.





## TEASELS

Following the article in a recent edition of the Woodchester Word about the Teasel Tower and the role of teasels in the 18<sup>th</sup> century Stroud Valleys wool industry, Mike Hemmings has submitted two articles for the Word, this one on the teasel and also the article on page about the Teasel Tower at Frogmarsh.

There are two members of the Teasel family you may see locally. The most common, found on waste land, is the Wild Teasel *Dipsacus fullonum*. This very prickly plant can grow tall, up to 6ft, has large egg shaped flower heads with purple flowers protected with spines. This biennial is described as native and frequent. It can be grown in the garden, comes from seed, and if left to over winter after flowering attracts Goldfinches. The Small Teasel *Dipsacus pilosus* is also biennial native but rare. It has creamy yellow flowers protected with spines, but a smaller head. I have seen it growing on the canal towpath near Marling School and in Woodchester Park.

The one you will not see is Fullers Teasel *Dipsacus sativus*. This is the plant whose seed heads are used to prepare Billiard Cloth. It was grown near Slimbridge in the 19C for use locally. It is still grown in South Somerset where it is harvested after flowering and the heads are stacked round a pole outside to dry before use. It failed to survive in my garden and I have not seen it growing wild.

Now if all this seems very forgettable, please remember two simple ideas:-

- 1) The wild teasel you see growing here is not the commercial teasel.
- 2) No teasel ever had or needed a large expensive purpose built round stone tower to dry its heads. The towers were for drying **wool**.


Mike Hemming

### References.

*Wild Flowers of Britain and Ireland* by Marjorie Blamey, Richard & Alistair Fitter. A & C Black 2003

*The Wild Flower Key*. Francis Rose. Frederick Warne 2006

*Plants with a Purpose*. Richard Mabey. Fontana/Collins 1977.



**NAILSWORTH & DISTRICT  
FLOWER ARRANGEMENT  
SOCIETY**

Present

**PALIMPSEST**

with  
*Morning Speaker - Nurseryman,  
Cotswold Garden Flowers*

**BOB BROWN**

and  
*Afternoon - National Demonstrator*


**NICK GROUNDS**

at  
**GIBLY HALL, WYCLIFFE COLLEGE, GL10 2AF**  
**WEDNESDAY 6TH APRIL, 2016**  
Doors Open 9.30am for 10.30am

• Tickets: £32 (incl coffee & two course lunch)  
Enquiries: 01453 758496 or 01453 835752

A donation from this event will go to:  
**'BRITISH HEART FOUNDATION'**

**WOODCHESTER**  
*Cabinet Makers*



Hand-made, Bespoke  
Kitchens & Interiors

Unit N6A Inchbrook Trading Estate  
Woodchester Nr Stroud  
Gloucestershire GL5 5EY Tel 01453 835580  
[www.woodchestercabinetmakers.co.uk](http://www.woodchestercabinetmakers.co.uk)



## IN THE VILLAGE HALL

### Tea Party in support of Syrian Refugees



A tea party was held in the village Hall on February 28<sup>th</sup> to raise funds for Syrian Refugees. The advertising stated that you should come with a big appetite and certainly this was needed as there were cakes aplenty, washed down with lashings of tea. all donated by villagers!! Donations came to a total of over £1,100 (with gift aid) Congratulations to the organisers Shona, Louise, Flavia, Fiona and Christina for a splendid effort in aid of those people whose lives have been destroyed and have no-where they can call home.



*Musical harmony was provided by Shona*

### The Village Hall - Your Village Still Needs You!

Despite our earlier pleas for help with running of the Village Hall, we are still in need of a few people to come forward and join the committee to help ensure a future for this valuable village asset. We ideally need two or three people to become trustees of the Hall and help with the overall management and responsibility in the future, and to ensure that we keep the future of the Hall secure. This is not be an onerous task as many of the duties can be split between the management team and there would not be a need to be more than four meetings a year.

As we have said before, the Hall is home to a multitude of clubs, societies and classes. There are currently classes for calligraphy, art, sewing, Pilates, yoga, morris-dancing, senior health and fitness, carpet bowls and often more! It is available for hire for meetings e.g. the Parish Council, social gatherings like the WI and private parties too! If you are interested in any of these activities do check out the notice boards and village web site: <http://woodchesterparish.org.uk>

Each Year we hold an AGM, which is open to the Public and takes place on this year on May 16<sup>th</sup>; the dates, time and agenda of meetings will be published on the village notice boards and web site; so if you are interested, do come along....and/or.....If you are able to help or want to learn more, please contact Malcolm Swait on 873254 or Kath Gay on 873348.

## PETER JOY

Sales & Lettings

**Sales: 01453 833747**

**Lettings & Management: 01453 833847**

**[www.peterjoy.co.uk](http://www.peterjoy.co.uk)**

### Woodchester Produce, Craft and Dog Show 2016

Saturday 10<sup>th</sup> September



Schedule of classes available in the village shop from 14<sup>th</sup> March  
or on line at [Woodchesterparish.org.uk](http://Woodchesterparish.org.uk)



This year there will be the usual classes with a few changes so get growing and plan your baking and preserving.



# WOODCHESTER PARK

## Spring comes to Woodchester Park

If you have never walked through Woodchester Park, make an effort to do so in late March and early April when the bluebells fill the woodland with a marvelous fragrance and a blue haze.

The National Trust, who own the Park, have recently completed work to expand the size of the car park and improve the surfacing and drainage of both the car park and the access road. Parking is free to National Trust members and there is a small charge for non-members. An additional car park, run by Woodchester Mansion volunteers is available on Bank Holiday weekends and for special events. Both car parks can be accessed from the road which runs from the B4066 to Nympsfield.

The popular Easter Egg trail will be run again over the Easter weekend. Details from the National Trust on [www.nationaltrust.org.uk/woodchester-park](http://www.nationaltrust.org.uk/woodchester-park)



The National Trust have made some changes to the markers which show the routes followed by the three walking trails in the park. The 1.7 miles Play Trail is now indicated by Orange Arrows. The moderate Boathouse walk (3.5 miles) in Pink and the strenuous 7 mile whole valley walk is shown in purple. Keen walkers will know that these trails are known as "Permissive Paths" which means that access on foot is granted with the landowners permission. A map showing the walking trails is available from the Trust car park, and from the visitor information desk at Woodchester Mansion.

### 2016 Season at Woodchester Mansion.

Woodchester Mansion will be open to the public from Tuesday 22<sup>nd</sup> March until Sunday 30<sup>th</sup> October, every day except Mondays, unless a Bank Holiday when the house will be open. Opening times are 11am to 5pm. The Café will also be open selling hot and cold drinks, snacks, cakes, soup sandwiches and other light lunches. You do not have to purchase a ticket for a house tour to enjoy the café, just come in and have a treat!

There is no public vehicle access to Woodchester Mansion and the track down the valley is steep and rough. Many people enjoy the 20 minute walk down the valley, but for visitors who prefer not to walk, there is a regular mini bus service in operation on all Mansion open days. The bus leaves the steps at the bottom of the NT Car park on the hour and makes the uphill return journey leaving the Mansion at a quarter to the hour.

## WOODCHESTER MANSION NEEDS MORE VOLUNTEERS.

Woodchester Mansion is run by a small charitable trust. There is a small team of paid staff, but most of the open days are run by volunteers. We need to recruit some more volunteers before the start of the season at Easter.

We are a friendly group of people from all walks of life and of all ages. If you join us you'll certainly make some new friends, as well as contributing to the local community. Volunteering also offers an opportunity to maintain old skills, learn new ones, and meet the public. It can provide a pathway back into work and develop young people. We organise occasional social events which are a good opportunity to meet new people.

On Open Days we need :

- Visitor and retail services volunteers
- Tea Room volunteers
- Tour Guide volunteers
- Minibus drivers (age 25 - 70 please)

Hours are very flexible and for all tasks we provide training. At first you will work with an experienced volunteer and you will not be expected to take on any task until you are 100% happy.

We also need volunteers to help with grounds maintenance and DIY inside the Mansion.

For our recruitment info pack, please contact the Mansion visitor services manager Sue Brown [sue.brown@woodchestermansion.org.uk](mailto:sue.brown@woodchestermansion.org.uk) or call 01453 861 541.

---

**"Found,** an item of jewellery, possibly of sentimental value, on the cycle track between Birds Crossing and Woodchester Station. Contact 873348

---



## LOCAL NEWS

### Village Concert

Woodchester WI reports that the Village Concert held on 4<sup>th</sup> December 2015 raised a total of £175.30 for the Cobalt Unit in Cheltenham. Sadly that was our last concert, an excellent evening of entertainment was poorly supported and in view of this the WI members voted in favour of not organising another concert for the foreseeable future.

We would like to publicly thank everyone who has been involved, albeit as performers, helpers or audience over the past 26 concerts. A total of over £3,600 has been raised and donated to 25 different organisations.

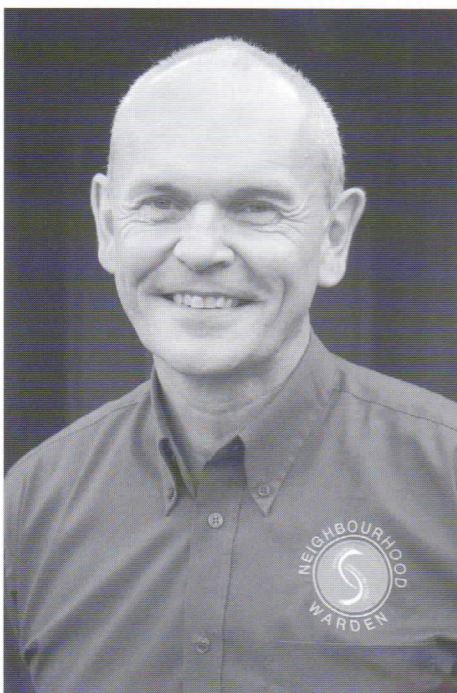
### Woodchester WI

We continue to meet on the third Thursday of each month at 7.30 p.m. in Woodchester Village Hall. Our numbers are increasing but we have plenty of space for more! Come along and join us. Our 2016 Programme can be found on the village website. For more information contact - Val (President) on 01453 873658 or Sally (Secretary) on 01453 873003



**Celebrate our Queen's 90th birthday**  
**12th June on the Church Green**  
**3-5pm**  
**A bring and share picnic cream tea**  
**Tea, coffee and cordial will be for sale**

### Neighbourhood Warden Update



I started as your new Stroud District Council Neighbourhood Warden on 04.01.16 and have already developed a good working relationship with your Parish Council. Although based at Ebley Mill, the intention is to spend at least 80% of my time on patch. You will see me patrolling the Parish and on route to incidents in my red 4x4 Barbie type Jimny. I cover the areas of Woodchester; Horsley; Nympsfield; Nailsworth; Owlpen; Minchinhampton; Amberley; Box; Brimscombe and the surrounding area. Our team of eight Neighbourhood Wardens provide cover for the whole of Stroud District, working 8-4 and 1-9 shifts on a week day and rostered Saturday working.

#### Helping to look after you

Wardens act as the "eyes and ears" of Stroud District Council, the police and the community. Our job is to reduce crime, assist anyone who feels vulnerable including older people and young people, as well as responding to low level anti-social behaviour issues.

We also provide invaluable advice and support with community safety, environmental improvements and housing management. The Neighbourhood Wardens are also first responders - first on the scene to provide medical assistance. Our team report and deal with a wealth of issues, from flying tipping and abandoned vehicles to anti-social behaviour and graffiti removal. Please do not hesitate in contacting me, should you require my assistance.

Dominic Everiss, Senior Neighbourhood Warden

T: 07753725185 E: dominic.everiss@stroud.gov.uk W: www.stroud.gov.uk

Follow the work of the Wardens on Twitter @sdc\_wardens

**Join us at the Woodchester Bunny Trail**  
**Saturday 19th March from 11am - 4pm**



**Everyone welcome**

Prizes and entertainment, cake sale and bouncy castle.  
Find 20 decorated bunnys throughout the beautiful village of Woodchester

Every completed trail map wins a prize  
Start point Woodchester Endowed School



### Orchard Pastures

There was a very good turnout for our wassailing in January. Some of the villagers who originally donated trees to the Orchard, hanging toast on the trees and singing to ensure a good crop. Wassailing seems to be increasing in popularity. This year, Stroud held its first wassailing festival, so we are right on trend. Orchard Pastures is the land below the Ram and is owned by a group of villagers. More information from [swalt.org@gmail.com](mailto:swalt.org@gmail.com) or Bert Cossins on 872407



## LOCAL BUSINESS

*Family Dentistry You Can Rely On*

dental  
practice

townes  
townes  
associates



100% of patients  
asked would recommend  
us to family & friends

**Satisfaction  
rating:  
more than  
99%**

[www.familysmiles.co.uk](http://www.familysmiles.co.uk)

**Quote 'WW' for a 50% discount on a full  
New Patient Examination with x-rays for  
just £39.50.**

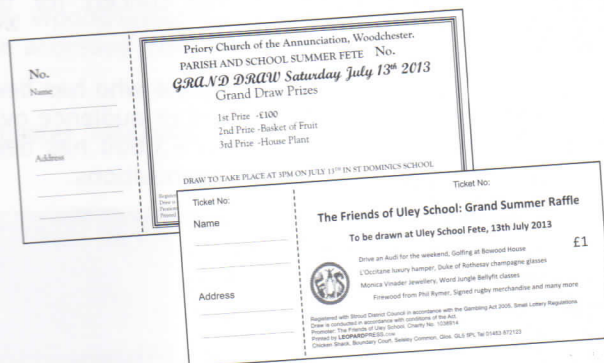
**Telephone us on 01453 827474**

# LEOPARDPRESS

PRINTERS & STATIONERS

LETTERPRESS • LITHO • DIGITAL

*Need to raise money for your  
local School or Charity?*



*We Print Raffle Tickets*

Perfed and numbered in books of 5  
Call or email now for Great prices

*Chicken Shack, Boundary Court  
Selsley Common, Glos. GL5 5PL  
Tel 01453 872123*

*stroud@leopardpress.com*

## Time to get moving



**The dog days of summer might be a little busier this year...**

In recent weeks we've seen many more buyers coming to the market, a significant increase in viewings and a 17% uplift in sales agreed.

Now's the time to speak to us about selling your home and making hay while the sun shines.

To find out how we can help you call 01453 568148 or visit

[www.hamptons.co.uk/Sell](http://www.hamptons.co.uk/Sell)

*Figures from June 2015*

**HAMPTONS**  
INTERNATIONAL  
*Beyond your expectations*

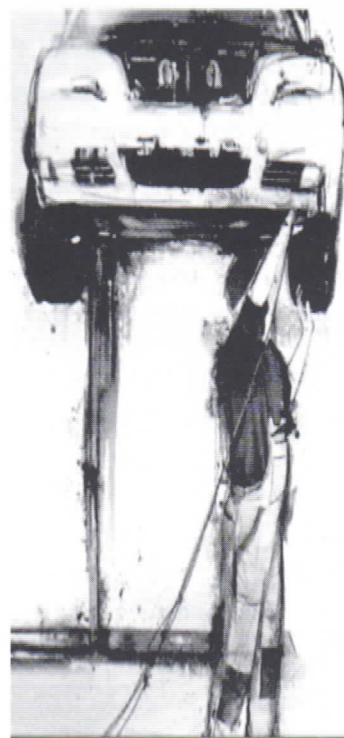
## WOODCHESTER MOT CENTRE

**MOT's, tyres,  
repairs and  
servicing. Friendly  
service and  
competitive prices.**

**Call Tony for  
information or to  
book an  
appointment.**

Unit B, Woodchester  
Industrial Estate,  
Station Road,  
Woodchester,  
GL5 5EQ.

**01453 873355  
07778 334611**





# OUR SCHOOLS

## Woodchester Endowed School

What really matters? This is a question that has driven the endeavours of the greatest philosophers for centuries. It is also a question that all of us at Woodchester Endowed Primary School have pondered, in our own small way. What are the most important lessons that our children should learn? Obviously the National Curriculum helps to some extent, but our school curriculum is much wider, encompassing many more opportunities. Something that we all agree is that children's emotional wellbeing is paramount. In support of this, we have recently held a special week whereby we focused on children's emotional health. Through the hook of the excellent film *Inside Out*, learning was centred around mindfulness and managing emotions and stressful situations. This pre-empted a national drive in this area, highlighted by Princess Katherine among others. After all, what could matter more than children being happy and equipped to deal with whatever life throws at them?



Class Ash, which includes the youngest members of our school community, have recently visited Swindon Steam Museum. They excitedly left soon after the school day and set off for a big adventure. The trip supported their learning about in topic as well as their English work around "The Train Ride". It is always wonderful for a Headteacher to hear a member of Year 1 recognising a picture of Isambard Kingdom Brunel! As ever, Class Ash were an absolute credit to the school and to themselves.

Sport is incredibly important to what makes Woodchester Endowed Primary the school that it is. We have an innovative approach to the teaching of PE through a multi skills approach, a plethora of after school club opportunities as well as terrific tradition of success in sporting tournaments. This year has been no different. Recently, children have taken part in cross country, Year 3/4 football, Year 5/6 football, boys and mixed netball, Year 3/4 and Year 5/6 rugby tournaments. This has meant that a large number of children have been given the opportunity to represent Woodchester at a sporting event. Success on the field has been

matched with exceptional attitudes of good sportsmanship.



Glyn Jones, Headteacher

## St. Dominic's School

### St Dominic's Catholic Primary School has a new Early Years Playground!



There was great excitement after our holidays as the Reception class children were introduced to their new refurbished outside classroom. The new playground mirrors all the exciting activities that happen in the classroom but on a more grand scale. They have large weighing scales, some balance beams, a large chalk board has been placed on the wall for gross motor skills and best of all a mud kitchen and a story telling chair. It has caused so much excitement that the year ones pop in to use it for some of their practical mathematics activities and the children have been outside working no matter how cold it is.

I, as Headteacher, am delighted with the finished work which was completed by a local company Discovery Timber Play who are based in Woodchester. James and Ali did a fantastic job and even went that extra mile by building the children some planting boxes for them to plant vegetables and carving the school badge into the story chair.



Please come in and have a look if you wish as we would love to share what is on offer for our reception class with everyone and the fine craftsmanship of our local craftsmen.

Briege Ward, Headteacher



# VILLAGE MATTERS

## Woodchester Historical Society Meetings

### Tuesday June 7th at 2.30 pm

Guided tour of Woodchester Mansion. Lasts approx. 90 minutes.

Meet in the National Trust car park at 2.15 to catch the shuttle bus or walk down the rough track and meet at the mansion at 2.25pm. Speak to Jill or Katharine if you need a lift.

The tea room in the servants hall will be open should you wish to purchase lunch before the visit, or light refreshments afterwards. Toilets available.

WARNING. It can be very cold in the Mansion, even in summer. Dress warmly! Sturdy shoes essential too as some of the floors can be rough.

**Cost £6.50**

### Tuesday 5th July at 7.30pm in the church undercroft

Those were the days, the Fighting 40's!

A return visit from Gillian Morss and Virginia Adsett with their fascinating collection of clothing and household items.

### Tuesday September 13th 7.30pm in the undercroft

Old Paths of Gloucestershire. An illustrated talk.

Alan Pilbeam.

To mark the 100<sup>th</sup> anniversary of their deaths that occurred during the First World War, a peal of muffled bells will be rung on the following dates to commemorate the lives of Walter Fruin and Walter Cox on the 12<sup>th</sup> or 13<sup>th</sup> and 30<sup>th</sup> April,

## Girlguiding Woodchester

With some of the older Brownies moving up to Guides, it has been great to welcome some new faces to Brownies and see them make new friends. Once all the new girls had made their Brownie Promise everyone started working towards their World Guiding badge, which tied in nicely with Thinking Day which is celebrated on 22<sup>nd</sup> February every year, when we remember how Guiding began and think of our sister Girl Guides and Girl Scouts all over the world. A District celebration for Rainbows, Brownies and Guides was held on Thinking Day in Nailsworth. Food, once again, seems to be the dominant criteria for Guides in Woodchester. Throughout this term we are running an on-going "Ready, Steady, Cook" competition between the Patrols. It's amazing what dishes the girls create in an hour and a quarter with sometimes a very odd variety of ingredients – sometimes even the clearing up gets done in this time, if they are bribed enough with extra points!

Both Brownies and Guides have parties arranged and on the 15<sup>th</sup> March we hope to welcome lots of you to our coffee evening fundraiser to raise money for the Acorns Children's Hospice and the Starlight Children's Foundation. An Easter themed activity evening is also planned for both the Brownies and Guides. The Guides are also looking forward to joining Nailsworth Guides on a trip to Cadbury world and to summer camp in Poole, Dorset.

Anyone interested in joining Girlguiding, either as a Brownie, Guide or Leader, please visit [www.girlguiding.org.uk](http://www.girlguiding.org.uk), or [www.gwoodchester.wordpress.com](http://www.gwoodchester.wordpress.com) or contact Jackie on 01453 821258.

## Lest We Forget

Several parishes in the Stroud and Nailsworth area are remembering the fallen of the Great War in their respective local magazines and newsletters, around the hundredth anniversary of their death. This is the third article for Woodchester.

### Walter Albert Cox

Walter Albert Cox was born c1872 at Oliver's Estate, South Travancore, India, the son of Rev John Cox and his second wife Anna Amy. John Cox was a native of Painswick who had gone to India with the London Missionary Society from which he was obliged to resign when he married an Ezhava woman in 1860.

In 1915, Walter was a tea planter when he came to London and enlisted in the Kings Royal Rifle Corps as a Rifleman. He transferred to the Machine Gun Corps and was appointed acting Lance Corporal 12 March 1916. On 30 March he was admitted to Belton Park Military Hospital in Grantham where he died on the 12 April as a result of malaria. He is buried in St Mary's churchyard and was originally remembered on the reverse of his aunt's gravestone. This inscription is difficult to read and a 'war grave' headstone was added at the foot of the grave several years ago.

### Walter William John Fruin

Walter William John Fruin was born on 1 December 1895 in Woodchester, the son of Frederick William Fruin, a gardener, and his wife, Hannah Mary nee Cock. He was baptised in St Mary's Church on 2 February 1896.

In 1901 the family were living in Atcombe Road and by 1911 they had moved to Convent Lane where Frederick was a gardener at the Convent and Walter was a gardener 'not employed'. Walter later worked at Henry Workman's Timber Yard.

Walter enlisted in the 10th Battalion of the Gloucestershire Regiment and was sent to France on 9 August 1915. He was a Corporal when he died of his wounds on 30 April 1916, aged 20 and was buried at Abbeville Communal Cemetery. At that time his parents' address was given as Little London, Kingscourt.

It would appear that Walter travelled to France with Albert Rigsby and endured the same experiences at the Battle of Loos in September and October of 1915. The 10th Bn were part of the 1st Division who stayed in the Loos sector until early 1916.

Abbeville is on the main road from Paris to Boulogne (N1), about 80 kilometres south of Boulogne. For much of the First World War, it was headquarters of the Commonwealth lines of communication and several Hospitals were stationed there including No 2 Stationary Hospital (Sept 1915 - Jan 1920). Assuming that Walter died in the hospital, he could have been wounded anywhere in the vicinity.



# OUR VILLAGE

## Some Woodchester Trees

Article by Rachel Hemmings

Woodchester is blessed with a wealth of trees from many parts of the world; each has a story to tell. Here are some of them.

### Small-leaved lime *Tilia cordata*

This tree standing on the green is a cutting from the ancient lime coppice in Silk Wood at Westonbirt. As this is believed to be at least 2000 years old it was thought to be an appropriate way to mark the Millennium, so Tree Wardens were allowed to have one to plant in their parish. Small-leaved lime is one of the two native species of lime, the other being the rare large-leaved lime, *Tilia platyphylla*, which occurs locally in Lineover Wood, near Cheltenham. The two are parents of the commonly planted common lime, *Tilia x europaea* of which there are numerous examples in the village. It differs from both parents in producing numerous shoots from the base. The flowers are sweetly scented and attractive to bees. It is a host of the parasitic mistletoe.



### Sweet chestnut *Castanea sativa*



Two large trees in the field between North and South Woodchester. They are probably 150-200 years old and appear to be in decline with dead branches. A few years ago the one near the footpath looked to be dying and two oaks were planted as eventual replacements. This appearance is misleading and only part of the natural life cycle of the tree. As a tree grows it forms annual rings of conducting tissue and increases the size of the canopy. A stage is reached at which these are in balance. Later the increase in woody growth is insufficient to keep pace with the growth of the canopy and water and nutrients do not reach all branches so some die. Both wood and canopy continue to grow at a slower rate and the tree becomes hollow with the dead wood in the centre rotting, the nutrients being re-absorbed. New shoots grow, forming a new, smaller canopy. An ancient tree has a massive hollow trunk and a small canopy, quite different from the early form. This process can be repeated and a long-lived species such as oak or chestnut may go through two or three cycles of decline and regrowth over several centuries. The tree which a few years

ago appeared to be dying now has a healthy new canopy which flowers prolifically.



### Caucasian wingnut *Pteryocarpa fraxinifolia*

This tree, which stands in Church Road opposite the churchyard, attracts attention by its tassels of winged nuts. Each small nut has a pair of wings which assist in the dispersal of the seed. It is a member of the walnut family, a native of the Caucasus and Iran and in Europe is sometimes planted for timber. The leaves are large with paired leaflets similar to walnut or ash.

---

## Nailsworth Festival

21<sup>st</sup> - 29<sup>th</sup> May 2016

The events on Festival Saturday (21<sup>st</sup> May) will start at 10a.m. in Mortimer Gardens. The programme includes entertainment for all the family and there is a market and many other activities across the town

The line-up for the week of the 2106 Festival should include something for everyone. The musical highlights include international classical performers the Escher Quartet; the London based blues, jazz and country duo Ma Polaine's Great Decline; music from local Gloucestershire folk musicians and singers and the big band sound from Jazz Friday. The spoken word will be represented by poet Wendy Cope and the written word by Clare Mackintosh, whose debut novel "I let you go" was in the Sunday Times Top Ten Bestsellers for 2015. The Pantaloons Theatre Company will present a production of "Gulliver's Travels" and the wildlife presenter Miranda Krestovnikoff will talk about her experiences notably on BBC's "The One Show" and "Coast". If you would like to become involved with the Festival or explore sponsorship options, please contact Mary Saunders, Chair of the Festival committee on 01453 832749.

A full programme of activities will be on the Festival website [www.nailsworthfestival.org.uk](http://www.nailsworthfestival.org.uk).



# WOODCHESTER HERITAGE

## THE ROUND TOWER at FROGMARSH

This is an early 19C wool drying tower. There are no English written records on how these towers were set up and used. I am indebted to the Industrial Archaeologist Dr. Ray Wilson for the drawings reproduced here and for information on the only written record. It comes from an American book of 1823 by William Partridge called *A Practical Treatise on Drying woollen cotton & skein*. His description is only a written one so our drawings were worked out by Ray Wilson. The Towers had three floors, the upper two were of wooden slats to allow steam & hot air to rise, while the ground floor was of stone brick or cement. The coal fired cast iron stove was in the middle of the building and the cast iron flue passed up through the roof. To protect the building the flue had iron rings and wedges to keep it in place. This left a round hole in the roof for the steam to escape. The drying machines consist of poles fixed so they could be rotated. The wool was hung on the arms to dry. According to Partridge such a tower could dry up to 240 lbs of wool every 12 hours. Coal was available because the Stroudwater Canal records a merchant was unloading coal at the Dudbridge wharf for the Nailsworth Valley & Avening. This set up is only practical for wool as hanks of spun yarn. It needed drying because it had been dyed.

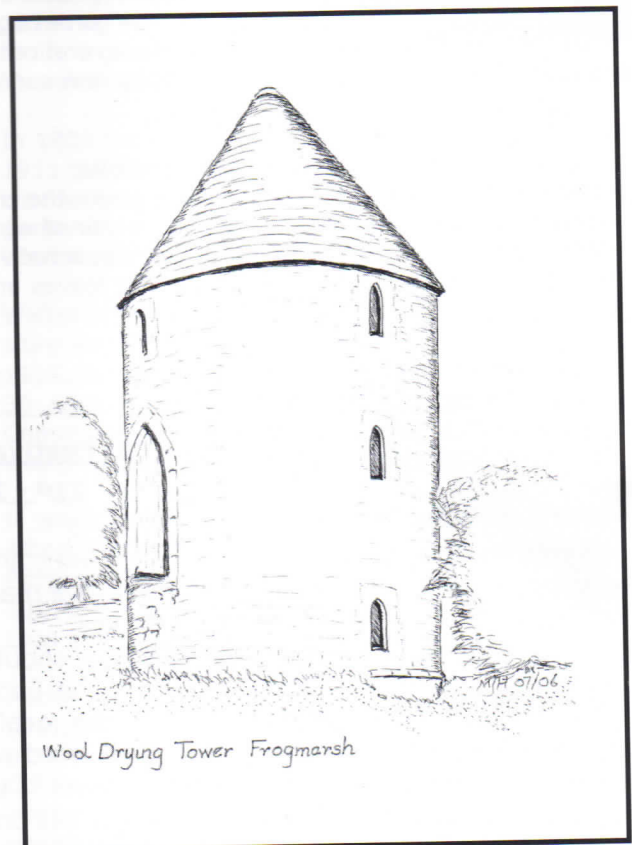
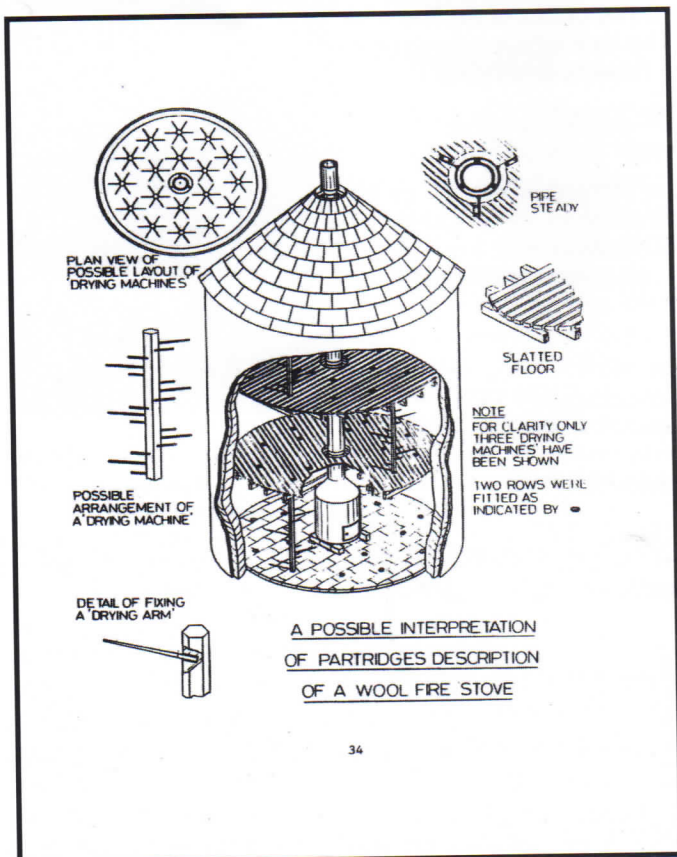
This was the period when machinery was being introduced into the woollen industry. There were carding machines, slubbing Billies and the spinning Jennies that together would produce yarn. Sir Samuel Wathen had Woodchester Mill rebuilt 1799-1802 for the new machines. This provoked a riot at Woodchester in 1802 but the factory workers supported the clothier and protected their livelihoods. But all weaving remained by hand in the village houses until much later. The Stroud area concentrated on producing high quality Broadcloth that was sometimes dyed before fulling. This way it would be easier to produce a cloth dyed evenly through the wool fibres. It was harder for the dye to penetrate the full cloth completely. Imagine a billiard cloth having white patches after intensive use.

Before the end of the 19<sup>th</sup> century, the tower would have gone out of use. In 1982 it became a dwelling with an extension as we see today.

Mike Hemming

### References:-

*Gloucestershire Society for Industrial Archaeology Journal 1989.*  
*Wool & Water. Jennifer Tann. The History Press 2012.*



**Two diagrams of the Frogmarsh "Teasel" Tower or Wool Drying Tower as explained in the article**



# PARISH COUNCIL, CHURCH AND EVENTS NEWS

## what Improvements Would You Like to See in Our Village?

Over the past six months Woodchester has been allocated approximately £7,500 for the provision of recreational facilities in the village. This money has come through Stroud District Council from s.106 payments from developers. These are charges based on the size of any proposed development where the developer is unable to provide recreation on-site. It appears that since the adoption of the new Local Plan, Stroud Planners are more active in ensuring developers are charged. The Parish Council has allocated the money already received to the mountain bike trails and to improve access through the village by replacing some stiles with kissing gates.

**Councillors would be very grateful for your ideas for improvements to our village.**

They are well-aware that a play area would bring great benefit to families in the village, but have over many years, tried without success to find a suitable piece of land.

**If you have any ideas for improvements however great or small, please contact the clerk Ann Bijkerk.**

Tel. 01453873456 Email: [clerk@woodchesterparish.org.uk](mailto:clerk@woodchesterparish.org.uk)

or use our Facebook page [www.facebook.com/woodchestercommunity](http://www.facebook.com/woodchestercommunity)

## Report of the Village Events Committee. February 2016

As I write, the sunshine is dazzling and everywhere daffodils are blooming, Spring is in the air and Christmas seems a long time ago. But so it was, on 21<sup>st</sup> December that there was a magnificent turn out for the Village Carols and Living Nativity. This time, members of the Nailsworth Silver Band joined carollers outside Bottle Green in South Woodchester, before nimbly getting themselves to the Royal Oak from where they led the North Woodchester carollers to the Church Green. The South Woodchester contingent meanwhile walked up Frogmarsh Lane and through the Village to join the celebrations on Church Green.

Amongst the singers were the familiar figures of Mary and Joseph with their 5 month old baby, (well, a little artistic licence is permissible!), shepherds, kings, the rather harassed and grumpy innkeeper, and, of course, the splendid Angel, Gabriel. The Committee is very grateful to all who took part, to the Band and to all of you who came to start the Christmas festivities in style. Meanwhile the hard working 'kitchen' team produced the ever popular mulled wine, (thanks to a kind donation from Bottle Green for which we are very grateful), and warm mince pies. So, a big 'thank you' from me to everyone involved both on the night and in organising the music and the Nativity.

Our next event will be on 12th June, the weekend chosen by the Palace for the Nation to celebrate our Queen's 90<sup>th</sup> Birthday. We are planning a 'bring and share' picnic cream tea on the Church Green from 3-5pm. Please come and bring scones, jam and cream to add to the communal 'spread'. Tea, coffee and cordial will be provided. Look out for the posters for further details.

The Produce and Craft Show will be on Saturday 10<sup>th</sup> September, on the Green and in the School Hall. If any one would like to use the opportunity to mount an exhibition in the Church that day, please get in touch with me ([penelopebrown140@gmail.com](mailto:penelopebrown140@gmail.com) Tel: 873431), as soon as possible. The Schedule of Classes will be available mid-March in the Village shop and on line at <http://woodchesterparish.org.uk/>

Happy planting and looking forward to seeing you all on 12<sup>th</sup> June.

Penny Brown

## St. Mary's Church - your local church

Dear Everyone

Spring sprang very early this year and looking out of the window as I write – I think it might be regretting it! Spring flowers that appeared so confident a month ago look a bit crest-fallen now under heavy frost. BUT as the days get longer and the sun climbs higher we know that Spring proper and some kind of Summer will arrive soon, transforming our world.

We've been thinking about transformation in church as well – not just ongoing plans for new kitchens and so on, but about ourselves – the walking church...

Throughout this year's Lent course and the regular services we have been thinking about the difference our faith should make in the way we live our lives and why. All too often, the organised church gives people the impression that faith is some kind of brownie point system or box ticking exercise. If you think the answer to the word puzzle on the last page is: 'We do good so God loves us' then we've given you completely the wrong idea and we're sorry. In reality, few of us need reminding that good intentions and gritted teeth rarely transform anybody. Most New Year's resolutions don't make it to February!

Instead, as we go through Lent, thinking about what Christ did for all of us on Good Friday and the hope Easter brings, we've been reminded that it's all the other way round... We don't need to strive to get God to love us. He loves us anyway - unconditionally and more than we will ever know. That's what transforms us if we let it. The real answer to this world puzzle is: 'God loves us so we do good'.

Note that **Easter Messy Church** is on Wednesday 16<sup>th</sup> March at 3.20 and that we also have an '**Experience Easter**' event in the church at 10.00 on Good Friday morning – A chance for young and old to explore the events of the first Holy Week together interactively and reflect on its impact on us today.

We've also got a couple of walking week ends coming up:

**April 15<sup>th</sup>-17<sup>th</sup> for ladies** – heading for Dorset. Contact Sue 07866 487911 or Coral 882475

**May 14<sup>th</sup>-15<sup>th</sup> for men** – visiting the Brecon Beacons. Contact David on 07974 403449 Both weekends are popular & the ladies event is already full but still let us know if you are interested and we'll find space if we can. Also, don't worry if you feel more like Homer Simpson than Sir Ranulph Fiennes – all are welcome.

*Happy Easter from all at St. Mary's*



## Woodchester Village Shop and Post Office



Newspapers, magazines, cards, dry cleaning and wide range of food & household products

**Shop open :** Mon- Frid 7.30 - 5.30  
Saturday 8.30 - 12.30 pm

**Post Office open :**  
Mon-Fri 9am - 5.30pm  
Saturday 9am - 12.30pm



Find your perfect coach holiday with us in 2016

**T**ravel with Rover European and create some truly great holiday memories! Meet new friends, travel with old friends, when holidaying with us you get all of this and much more:

- Wonderful destinations in the UK and Europe
- Great value for money on quality holiday itineraries
- Experienced, friendly and helpful staff
- Door to door service available
- Holiday insurance if required

**2016 holiday brochure out now**

**Make sure you get your copy - call our office today!**

**01453 832121** quote **Word15** when you call

Like us on Facebook – Rover European Travel 

Spring Mill, Avening Road,  
Nailsworth GL6 0BS

[www.rovereuropean.co.uk](http://www.rovereuropean.co.uk)



**Coach Hire needed for a special occasion?**

Maybe a wedding, theatre outing, garden visit.  
We can help with that too. For all your coach hire needs,  
**Call us today for a no obligation quotation!**



## The Royal Oak

Church Road, North Woodchester GL5 5PQ

Tel : 01453 872735

HOME MADE FOOD SERVED

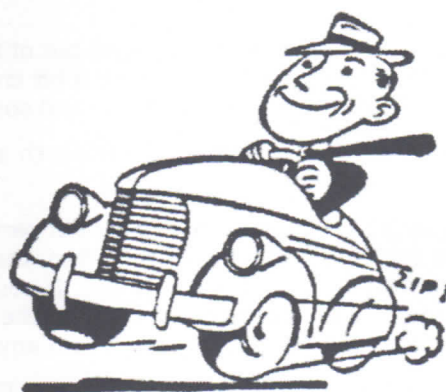
SUNDAY LUNCHTIME

LOCALLY SOURCED FRESH INGREDIENTS

REAL ALES  
LIVE BANDS  
DARTS  
QUIZ NIGHTS  
OPEN MIC NIGHTS  
POKER NIGHTS

Facebook: TheRoyalOakPub  
[www.royaloakpub.co.uk](http://www.royaloakpub.co.uk)

## N. Scotford Ltd.



Your local garage for services  
and all classes of vehicle MOTs.  
A personal and caring service.

Station Road  
South Woodchester  
Tel 01453 873787



# OUR WOODCHESTER

## You've heard it through the grapevine.



*By Simon Taylor, Sales & Marketing Manager, Woodchester Valley Vineyard.*

Woodchester Valley Vineyard is a family owned vineyard based in the beautiful Cotswolds area of outstanding natural beauty. We currently have 60,000 vines on 45 acres of land across our three sister sites. Our trial acre at Amberley was planted in 2007, followed by Woodchester in 2012 and finally Doverow, Stonehouse in 2013.

We produce a range of still white, rose and sparkling wines. Our still wines are available to buy now. Our sparkling is being made in the 'traditional method' (the same as Champagne) where a secondary fermentation takes place in the bottle. This takes longer to make and our first release English Sparkling Wine will be available in the next 18 months.

Starting with a trial acre plot, planted in 2007 at our Amberley site, alongside the cycle track from Stroud to Nailsworth, we are now harvesting from all three of our sites. The varieties picked last autumn included the champagne trio of Chardonnay, Pinot Noir and Pinot Meunier, and for our still wines, Bacchus, Pinot Gris, Pinot Blanc, Seyval Blanc, Pinot Noir and Regent. The wines are tasting very good at this stage and will be released sometime in the early summer.

It is a busy time in the Vineyard with the pruning season well underway and repairs and maintenance to the trellis and machinery ongoing. Each vine will take approximately 3 minutes to prune, pull out the dead wood and tie down on to the wire. This would take a single person 375 days to complete the task! Needless to say we work with an experienced team to get the job done in time for bud burst in spring.

Following pruning, the vines would be expected to break bud in the spring with the average flowering period occurring during the Wimbledon fortnight when we would hope the retractable roof on Centre Court will not have to be deployed at all for optimum flowering conditions. Flowering is a delicate process, the vines self pollinate and do not require bees although bees are always present in the vineyard.

During the summer months the vines grow vigorously and a large part of the summer work is manual canopy management to allow air and sunshine to reach the bunches of grapes. Veraison, the period of the ripening of the grapes, will start at any time from late August to September with harvest from late September throughout October and, in later years, into November.



Some of the grape varieties we grow (such as Bacchus, Seyval Blanc and Regent) are perhaps not as well known as Chardonnay or Pinot Noir, but we've chosen these varieties because they produce quality fruit in cooler climates such as England. Bacchus is a multi award winning, single varietal grape which makes delicious, aromatic dry white wines with a distinctive fruity bouquet.

When it comes to wine making, we believe we have to play to our strengths and choosing the right vines for the type of soil we have across our three sites is something that takes careful consideration and planning. We believe it's important that our wines also adhere to strict European Protected Geographical

Indication (PGI) or Protected Designation of Origin criteria. (This is similar to the appellation d'origine controlee (AOC) which used to be referred to in France). We do this as a mark of quality in our wine making process. We're very excited about our 2015 vintage wines, and we hope that readers of the Woodchester Word will enjoy tasting them with us in the very near future.

For more information about wine tastings, events, where and how to buy our wines or simply to be kept up to date on developments at Woodchester Valley Vineyard, join our mailing list by emailing [simon@woodchestervalleyvineyard.co.uk](mailto:simon@woodchestervalleyvineyard.co.uk) with 'add me to your mailing list' in the 'subject' section.

---

### **Drama Success for Olly Adams**

Olly Adams (age 13) has gained a place as a member of the 2016 Company of The National Youth Music Theatre which will involve him having a role in the Piper of Hamelin which is to be performed at the Theatre Royal, Bury St Edmunds, The Rose Theatre, Kingston, the Curve Leicester and Tonbridge School. He will also participate in their 40th Anniversary Concert in London and the NYMT Christmas Concert. Look out for opportunities to support him as he will be involved in some local fund raising activities to raise money for his fees and expenses for the year.

*Ed - well done Olly*

---



## **The Woodchester Website –**

**[www.woodchesterparish.org.uk](http://www.woodchesterparish.org.uk)**

Villagers are reminded to visit the Woodchester Parish website regularly to keep up to date with events and happenings taking place in the village.

Copies of past editions of the Woodchester Word are on the village website and can be accessed on [woodchesterparish.org.uk](http://woodchesterparish.org.uk)

### **Heard in school :**

One pupil talking to another: "I've learnt so much from my mistakes that I'm thinking of making a few more!"

### **Heard in the pub.....**

Two women talking about stereotypes of people: "The problem with stereotypes is not that they are untrue, but that they are incomplete. They make one story become the only story"

"The key in life is not to prioritise your plans in life but to plan your priorities"

Thought for the day : *Inside every old person is a young person wondering what happened!*

**The "Woodchester Word" is an independent publication and is funded by advertisers. Please mention the Woodchester Word when replying to the adverts in this edition.**

**Articles, items for publication and letters to the editor should be forwarded to Rod Harris, tel: 872317 or 0777 565 2379, or by email (preferred)**

**[woodchesterword@gmail.com](mailto:woodchesterword@gmail.com)**

***(Please note new email address)***

**Deadline for the next edition is July 1<sup>st</sup> 2016**

## **Dates for your Diary**

### **Winter in Woodchester**

**St. Mary's Church, North Woodchester** : See notice boards or web site for times of services.

Palm Sunday 9.00 and 11.00 a.m.,

Good Friday Experience Easter 10.00 a.m.

Easter services : Easter Day 9.00 and 11.00 a.m.

**Church of the Annunciation** : See notice board for details of Christmas Services

**Messy Church:** Wednesdays, monthly, at 3.15 p.m. in the church (details from Liz Hale 765422) Next Messy Church April 20<sup>th</sup> and May 18<sup>th</sup>

**Lunch-with-friends** at St. Mary's Church on third Friday of the month (usually) at 12 noon. Contact Liz on 872287 or Christina on 873481 for details. Next dates : Fridays April 18<sup>th</sup>, May 22<sup>nd</sup> and June 17<sup>th</sup>

**Saturday Coffee Mornings** - first Saturday in each month, in the Undercroft Room, entrance near main gate. 10.30 a.m. All welcome.

**Historical Society : Tuesday June 7<sup>th</sup> at 2.30 pm**

Guided tour of Woodchester Mansion.

**Tuesday 5<sup>th</sup> July at 7.30pm**

Those were the days, the Fighting 40's!

A return visit from Gillian Morss and Virginia Adsett with their fascinating collection of clothing and household items.

## **Village Hall**

### **Monday**

1400-1600 Circle Dancing (alternate weeks 07814 011980)

17.45 - 19.00 Pilates 07773 788608

1915-2245 Table Tennis Club (Sept-March, 07702058754)

### **Tuesday**

1000-1200 Art Group (01453 873689)

1915-2245 Table Tennis Club (Sept-March, 07702058754)

### **Wednesday**

1000-1600 Calligraphy- alternate weeks (01452 387768)

10.00 - 17.00 Sewing Group (once a month) (contact 07786 547 820)

19.30 - 20.30 Taijiwuxigong (Contact 01453 7947)

### **Thursday**

1000-1200 Senior Health and Fitness (01285 885766)

1830-2130 Parish Council (1st in alternate months)

1930-2130 Women's Institute (3rd in month, 873658)

1930-2130 Morris Dancing (2nd, 4th, 5th, 731752)

### **Friday**

1000-1200 Art Class U3A (01453 872044)

1915-2245 Table Tennis Club (Sept-March, 766116)

*Views expressed in this paper are those of the editor and not necessarily those of Woodchester Parish Council. We reserve the right to edit or omit any material submitted for publication. No liability is accepted for loss or damage arising from any omission of copy or advertising.*